

Sinking in Cement – Summative Assignment

You are trying to get the job to pour concrete for several houses in the newest neighborhood in town. Three neighbors are all getting concrete work done and each family has decided to get an estimate and then they will compare quotes to decide which one to go with.

Your Task

- Choose one of the following three house plans to do an estimate for.
- Your estimate must include:
 - Driveway
 - Sidewalk to back yard
 - Garden edging
 - One other concrete feature
- You will need to calculate the total materials.
- You will need to calculate the total cost of the materials.
- You will need to add in a cost for wear and tear on your machines.
- You will need to add in your own labour costs. Remember you want to be competitive!

The Design

- The neighbors are all flexible and leave it in your capable hands to come up with a design and plan that will make their house beautiful. You can decide how wide and what shape to make the driveways, sidewalks, where to put the gardens and how many and what other feature you would like.
- You must stick to industry standards with a 12” base of B-grade gravel under the driveway with a 6” base of A-grade gravel and a 5” slab of concrete.
- You must include the framing wood and rebar to ensure the quality of your work.
- You want the house to look ready for a magazine when you are done so make sure you are thinking “what will look best for this house?”

Hand In

- The plan of your choice with drawn in additions of what you will be installing for the customer.
- ALL of your material calculations separated by type of job
- Your estimate calculations and total amounts
- Conclusion of what would be best for the customer and why
- Reflection on your experience with the assignment

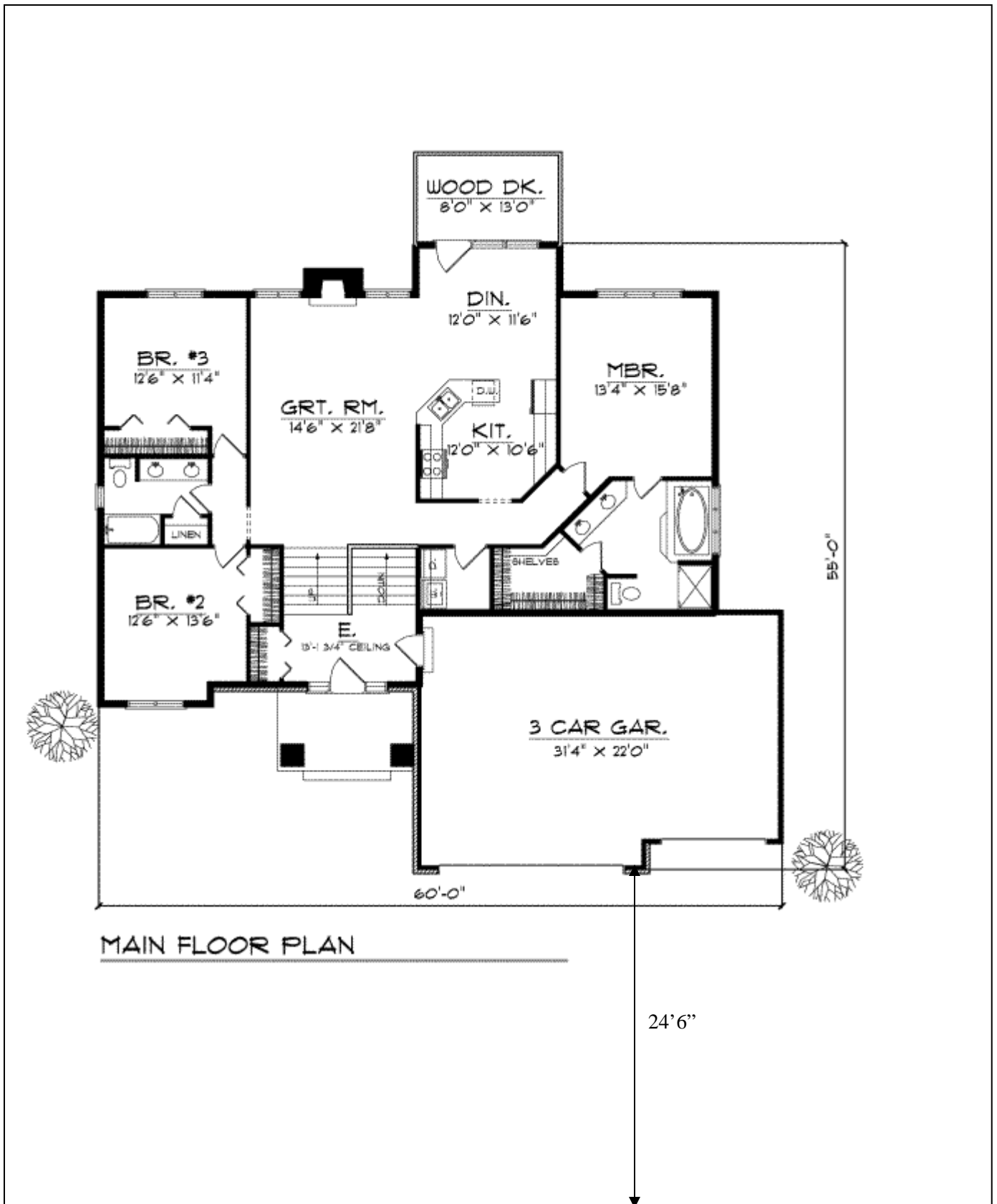
** If you are having difficulty finding a measurement please see your teacher WITH a copy of your house plan**

Sinking in Cement – Summative Assignment
RUBRIC

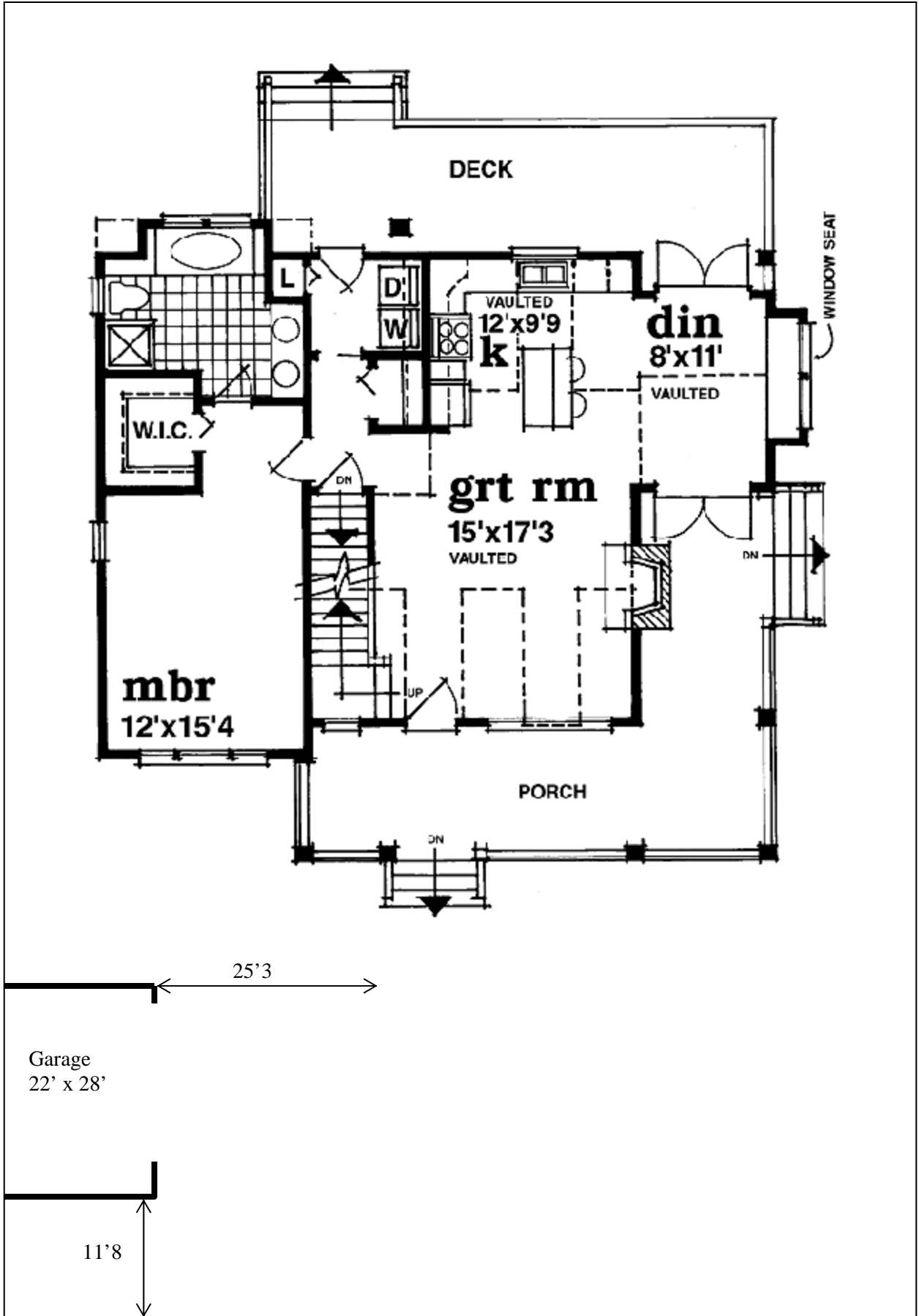
You will be evaluated using the following rubric

	<u>Level 1</u>	<u>Level 2</u>	<u>Level 3</u>	<u>Level 4</u>
Knowledge <ul style="list-style-type: none"> - conversions - formulas - Use of industry standards 	<ul style="list-style-type: none"> - Some conversions are calculated correctly and they may or may not be used throughout the assignment - Mostly appropriate formulas selected with mistakes. - Little evidence of industry standards in calculations 	<ul style="list-style-type: none"> - Most conversions are calculated correctly and may be used throughout the assignment - Appropriate formulas are selected but they may have mistakes -Some industry standards applied and used 	<ul style="list-style-type: none"> - All conversions are calculated correctly and mostly used throughout the assignment - Appropriate formulas are selected - Most industry standards applied and used 	<ul style="list-style-type: none"> - All conversions are calculated correctly and used throughout the assignment - Appropriate formulas are always selected for each item - All industry standards applied and used.
Application <ul style="list-style-type: none"> - material calculations - Ordering amounts 	<ul style="list-style-type: none"> - Some volume, area and perimeter calculations calculated correctly or some are missing -Few amounts ordered correctly 	<ul style="list-style-type: none"> - Most volume, area and perimeter calculations calculated correctly - Some amount ordered correctly 	<ul style="list-style-type: none"> - All volume, area and perimeter calculations calculated correctly -Most amounts ordered correctly 	<ul style="list-style-type: none"> - All volume, area and perimeter calculations calculated correctly with proper rounding - All amounts ordered correctly
Thinking <ul style="list-style-type: none"> - position of items - Material costs 	<ul style="list-style-type: none"> - Items selected are not drawn appropriately with inappropriate measurements - Few material costs are calculated correctly 	<ul style="list-style-type: none"> - Items selected are not drawn appropriately with appropriate measurements - Some material costs are calculated correctly 	<ul style="list-style-type: none"> - Items selected are drawn appropriately with appropriate measurements - Most material costs are calculated correctly with tax 	<ul style="list-style-type: none"> - Items selected are drawn appropriately and esthetically pleasing for the consumer with appropriate measurements - All material costs are calculated correctly with tax
Communication <ul style="list-style-type: none"> - Report - Conclusion - Reflection 	<ul style="list-style-type: none"> - Some components are handed in. - Total cost for consumer is inappropriate or missing wear and tear and labour. - Reflection is missing 	<ul style="list-style-type: none"> - Most components are handed in. - Total cost for consumer is inappropriate - Reflection shows some insight. 	<ul style="list-style-type: none"> - All components are handed in. - Total cost for consumer may be too low or high with industry standards. - Reflection shows good insight. 	<ul style="list-style-type: none"> - All components are handed in. - Total cost for consumer is appropriate including wear and tear and labour. - Reflection shows significant insight.

Plan #1
(3 car attached garage)



Plan #2
(Separate 2 car garage)



Plan #3
(Single attached garage)

